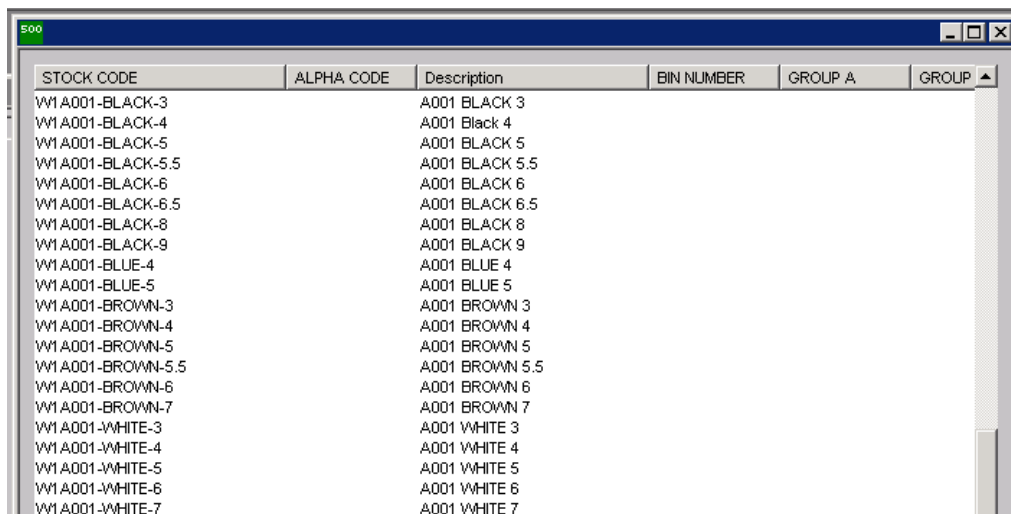


Sage Line 500 / Sage 1000 Sales Order Processing

Style/Color/Size (and more!)

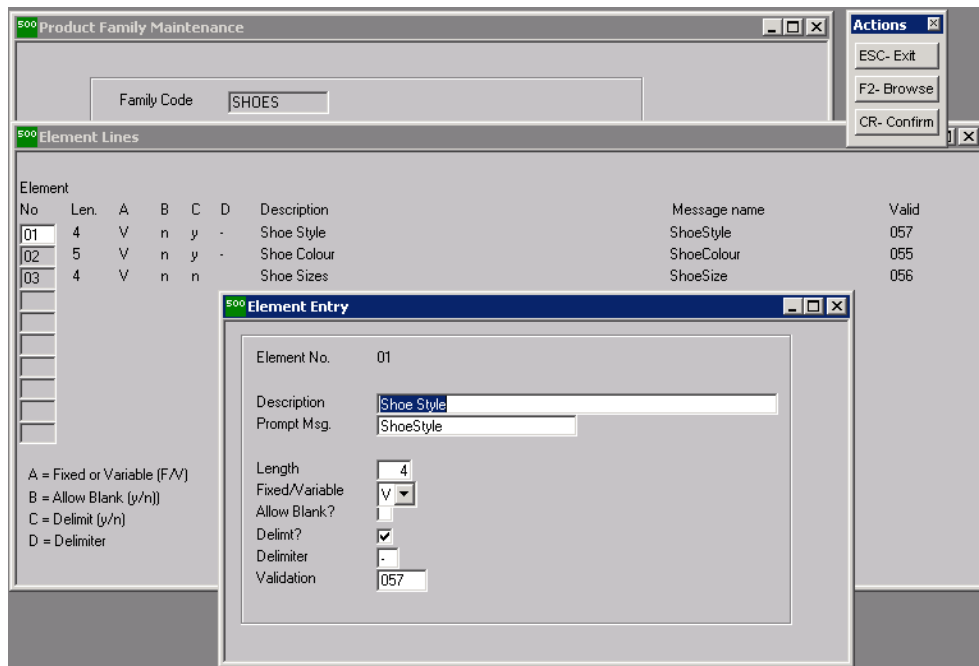
If you have products sets that have common elements but varying attributes per product code, the structure of the product code can be defined to create a product set pad in Sales Order Entry.



STOCK CODE	ALPHA CODE	Description	BIN NUMBER	GROUP A	GROUP
W1A001-BLACK-3		A001 BLACK 3			
W1A001-BLACK-4		A001 Black 4			
W1A001-BLACK-5		A001 BLACK 5			
W1A001-BLACK-5.5		A001 BLACK 5.5			
W1A001-BLACK-6		A001 BLACK 6			
W1A001-BLACK-6.5		A001 BLACK 6.5			
W1A001-BLACK-8		A001 BLACK 8			
W1A001-BLACK-9		A001 BLACK 9			
W1A001-BLUE-4		A001 BLUE 4			
W1A001-BLUE-5		A001 BLUE 5			
W1A001-BROWN-3		A001 BROWN 3			
W1A001-BROWN-4		A001 BROWN 4			
W1A001-BROWN-5		A001 BROWN 5			
W1A001-BROWN-5.5		A001 BROWN 5.5			
W1A001-BROWN-6		A001 BROWN 6			
W1A001-BROWN-7		A001 BROWN 7			
W1A001-WHITE-3		A001 WHITE 3			
W1A001-WHITE-4		A001 WHITE 4			
W1A001-WHITE-5		A001 WHITE 5			
W1A001-WHITE-6		A001 WHITE 6			
W1A001-WHITE-7		A001 WHITE 7			

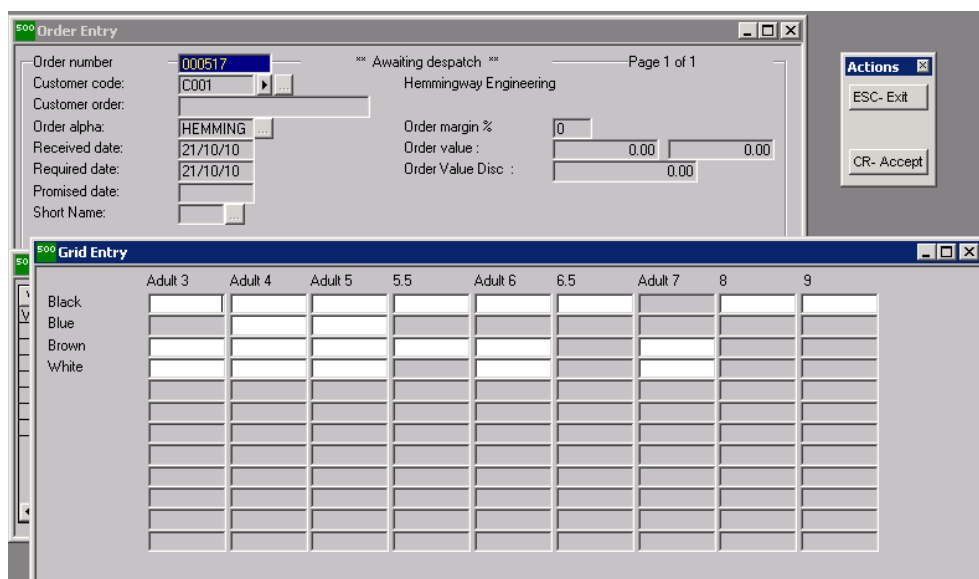
Each discrete product code is created in Inventory Control.

In addition to holding the products in Inventory Control, product families are defined. There may be up to 10 elements to the structure. Each element can be a fixed length, variable length or even blank. If the element is variable, an element delimiter is required in the coding structure. Each data element can be validated against standard narrative codes, the description of which can be displayed in the product set pad.



The product family structure is defined.

Now the system knows about the products and how they are structured, a product set pad can be used to enter the quantities required for each variation in the product set.



Sales Order Entry displays the product family.

As soon as the pad quantities are entered, pressing 'Accept', auto creates a sales order detail line for each of the product variants.

Vection Technology Limited
 Forge Works Lane End High Wycombe HP14 3HJ
 Tel: 01494 880500 Email: info@vection.co.uk